

# Health Professions Advising Newsletter

March 2021

## In this Issue

Rec. Women in  
Healthcare.....Pg 1 - 2  
March Calendar..Pg 3  
Events &  
Activities.....Pg 4-28

## Appointments and Drop ins

For drop ins, please text "L  
and S Advising" to 805-585-  
5821 during regularly  
scheduled Pre-Health or  
Pre-Law drop in hours and  
an advisor will call you.

For appointments, use the  
Letters and Science  
Advising Appointment  
system to make an  
appointment and select "by  
phone".

## Follow Us!

Stay up-to-date on pre-health  
related events and  
opportunities both on and off  
campus by following us on  
Facebook  
(UCSB Pre-Health Advising)  
and Instagram  
(@ucsbprehealthadvising)!



## Recognizing Women in Healthcare for Women's History Month

By Anna Meehan

March is Women's History Month, so we at Health Professions Advising want to share with you some incredible advances women have made in healthcare over the past few decades from advances in AIDS research, to making health care more



Illustration by Brianna Gilmartin, Verywell

accessible to underserved communities around the world (and so many fields in between). Healthcare is vital to our society and affects people's daily lives. As so many of us have realized due to the COVID-19 pandemic, there is still so much work that must be done to inform providers, patients, government officials and others of disparities in health care. It is important that we, as active members of society and future healthcare workers, acknowledge the progress that has been made, while advocating for further change to provide people from all backgrounds (including socioeconomic status, ethnic and cultural backgrounds, documentation status, insurance, etc.) equitable access to healthcare. We have included several links on topics regarding women in healthcare, systemic racism and discrimination in healthcare that we urge you to check out to stay well informed and help advocate for change.

**Continued on Page 2**

## Contact Info

Location: 2105 North Hall | Email: [prehealthinfo@ltsc.ucsb.edu](mailto:prehealthinfo@ltsc.ucsb.edu) | Phone: (805) 893-2038

## **Recognizing Women in Healthcare for Women's History Month**

By Anna Meehan

We have also included links to websites that highlight National Women's History Month resources to learn the integral role women have played in advancing our society and the progress that has been made such as fighting for the right to vote, own a bank account, have control over our own bodies, close the pay and so many other issues. Even in 2021, one must acknowledge there is a long way to go until women are truly seen as equal to men in society, but change is possible when we come together for a common goal!

Women's History Month Links:

### **10 Modern Female Innovators Who Are Changing Medicine**

<https://www.verywellhealth.com/women-shaking-up-health-care-4588098>

### **Women who changed the world - NobelPrize.org**

<https://www.nobelprize.org/women-who-changed-the-world/>

### **Closing the gender pay gap in medicine**

<https://www.aamc.org/news-insights/closing-gender-pay-gap-medicine>

### **Iconic Women To Celebrate This Women's History Month (2020)**

<https://www.pbs.org/articles/2020/02/iconic-women-to-celebrate-this-womens-history-month/>

### **Women's History Month 2021 - HISTORY**

<https://www.history.com/topics/holidays/womens-history-month>

# Health Professions Advising Events & Activities Calendar

## March 2021

Note: drop-in advising will take place on Tuesdays and Wednesdays from 1:00pm - 3:30pm & alternating Fridays from 9:00am - 11:30am (see below)

1 Monday	2 Tuesday	3 Wednesday	4 Thursday	5 Friday	6 Sat.	7 Sun
				<a href="#">UPitt PSTP Zoom Presentation: 1pm PST</a>		
8 Pass 3 Begins	9 Phone Drop Ins: 1pm-3:30pm  PVMA Meeting 7pm-8pm	10 Phone Drop Ins: 1pm-3:30pm	11	12 Phone Drop Ins: 9am-11:30am  Last day of Instruction	13	14 Final Exams Begin
15	16 Phone Drop Ins: 1pm-3:30pm	17 Phone Drop Ins: 1pm-3:30pm	18	19 Last day of Winter Quarter	20	21
22 PVMA Meeting: 7pm-8pm	23 Phone Drop Ins: 1pm-3:30pm	24 Phone Drop Ins: 1pm-3:30pm	25	26	27	28
29 First Day of Spring Quarter	30 Phone Drop Ins: 1pm-3:30pm	31 Phone Drop Ins: 1pm-3:30pm	April 1	April 2	April 3	4

### Update on the INT 184PD Clinical Shadowing Experience

Unfortunately, INT 184PD will not be offered during the Winter '21 Quarter due to restrictions in place at local hospitals and clinics stemming from the ongoing pandemic. We do not know if we will be able to offer the course in the spring, but we will reach out via our prehealth listserv once we begin accepting applications again. In the meantime, please visit the Extracurricular Experiences section of our website to learn about opportunities that are currently available, both in-person and remotely. Lastly, please be aware that most clinical experiences will be limited to paid, essential positions, many of which will require some form of training and/or certification, such as EMT, MA, CNA, or scribing.

# Which Biochemistry Course should I take?

## MCDB 108 vs MCDB 110

by Juliette R., Pre-Health Peer Advisor, 4th Year Cell & Developmental Biology Major

### MCDB 108 series

MCDB 108 series consists of MCDB 108A/108B/108C and covers principles of biochemistry, metabolism and enzyme kinetics, and computational and systems biology, respectively. This series is suited for those interested in an in-depth education in biochemistry and/or are planning to go into scientific research. MCDB 108A/B are prerequisites for the biochemistry lab, MCDB 109L.

Note: MCDB 108A/B/C required for Cell and Developmental Biology, Microbiology, and Biochemistry and Molecular Biology majors; MCDB 108A/B required for Pharmacology majors.

### MCDB 110

MCDB 110 offers a comprehensive overview of the principles of biochemistry and touches on all topics tested on the MCAT. Recommended for non-MCDB majors who must take biochemistry for professional school. However, if your desired professional school requires a biochemistry lab course, MCDB 110 does **not** allow you to take MCDB 109L.

Note: Cornell Veterinary School does not accept MCDB 110 as sufficient preparation; please check with the professional schools you are interested in for their specific policies.

### Which do I take?

MCDB 110 **is** sufficient for the MCAT along with proper studying and prep materials, but check with the professional schools that you are interested in for how many quarters of biochemistry they require.

MCDB 108A and MCDB 108B would also cover all topics necessary and may offer some deeper understanding that is helpful for research positions. MCDB 108C, which teaches Computational and Systems Biology, is not necessary for the MCAT.



# Association of Schools and Programs of Public Health (ASPPH)

ASPPH is offering a series of virtual fairs this spring similar to the fall fairs we held. Over the course of six events, students can learn about, and interact with admissions staff, from 48 of our members.

Each fair will begin with a five-minute overview from each of the eight presenting institutions, followed by breakout rooms to connect with each school or program individually.

## Fairs will be held:

March 2 – 12:00 – 2:00pm CT

March 3 – 12:00 – 2:00pm PT

March 4 – 12:00 – 2:00pm ET

March 9 – 12:00 – 2:00pm PT

March 10 – 12:00 – 2:00pm ET

March 11 – 12:00 – 2:00pm CT

Visit this URL to register:

<https://thisispublichealth.org/events/>

Visit this URL to find programs still accepting applications:

<https://programfinder.aspph.org/?additionalFilters=Currently%20Accepting%20Applications&locationDistance=25&locationKeywords=&programAreaKeywords=>



# Are you interested in taking courses at UCSB this summer? If so, read the information below!

For many students, taking courses at UCSB during the summer is a great way to get ahead in degree requirements, retake courses, or to get back on track from a setback faced during the regular academic year. These are all great reasons to take summer courses, but for pre-health students, there are a few things you should consider prior to registering.

First, it's important to remember that a key goal of yours as a pre-health student is to demonstrate to professional school admissions committees that you will be able to successfully manage the rigorous science curriculum you will face while in professional school. You can begin to do this, in part, by performing well in your undergraduate courses, particularly your professional school prerequisite science courses, while also engaging in extracurricular experiences to further your understanding of healthcare, explore personal interests, and to experience personal growth. Doing this during the regular academic year can help you to build the resilience and skills necessary to be successful in professional school.

Below are some points to consider as you think about your plans moving forward.

## **You might want to consider taking courses in the summer if**

- You need to retake a lecture or lab course you earned a C- or lower in or to take a lecture or lab course you missed during the regular academic year (Likely Chem 1A-B-C/AL-BL-CL)
- You need to take or retake a Math or Stats course (Math 34A-B, 3A-B, PSTAT 5A/5LS)
- You want to get started on the Physics series (Physics 6A-B-C/AL-BL-CL)
- You want to take a GE or two
- You want to take a non-degree-essential course (ie, a course that doesn't explicitly fulfill a degree requirement other than providing units toward graduation)

## **You might want to consider *not* taking courses if you are doing so for these reasons**

- You want to make your science course load "easier" next year
- You want to take a "difficult" science or math course without having to worry about taking other courses at the same time
- You want to finish your GEs early (A balanced schedule containing major and GE courses may be ideal for some students.)

If you have questions about summer courses and whether taking professional school prereqs over the summer is right for you, please speak to a pre-health advisor during drop-in advising, every Tuesday and Wednesday from 1:00pm - 3:30pm. More information can be found on the Health Professions Advising website, <https://healthsciences.duels.ucsb.edu/>.

For more information about Summer Sessions, please visit <https://www.summer.ucsb.edu/>.

CREATE!  
SUMMER!

SESSIONS	JUNE	JUL	AUG	SEPT			
<b>A</b> 6 weeks	6/21 - 7/31						
<b>B</b> 6 weeks			8/2 - 9/11				
<b>C</b> 10 weeks	6/21 - 8/28						
<b>D</b> 3 weeks	6/21 - 7/10						
<b>E</b> 3 weeks		7/12 - 7/31					
<b>F</b> 3 weeks			8/2 - 8/21				
<b>G</b> 3 weeks				8/23 - 9/11			
DEADLINES	A	B	C	D	E	F	G
<b>DROP W/ REFUND</b>	Jun 25	Aug 6	Jun 25	Jun 25	Jul 16	Aug 6	Aug 27
<b>DROP A COURSE</b>	Jul 7	Aug 17	Jul 19	Jun 28	Jul 19	Aug 9	Aug 30
<b>ADD A COURSE</b>	Jun 25	Aug 6	Jun 25	Jun 25	Jul 16	Aug 6	Aug 27
<b>ADD W/ APPROVAL CODE</b>	Jul 1	Aug 12	Jul 12	Jun 25	Jul 16	Aug 6	Aug 27
<b>CHANGE GRADING OPTION</b>	Jul 20	Aug 30	Aug 13	Jul 6	Jul 26	Aug 16	Sept 7
<b>PAY FEES*</b>	Jun 23	Aug 4	Jun 23	Jun 23	Jun 23	Aug 4	Aug 4





**CREATE!  
SUMMER!**

REGISTRATION	PASS 1	PASS 2	PASS 3
SENIORS & GRADS	Apr 5	Apr 19	May 3
JUNIORS	Apr 6	Apr 20	May 3
SOPHOMORES	Apr 7	Apr 21	May 3
FRESHMEN	Apr 8	Apr 22	May 3
UC VISITING		Apr 23	May 3
NON-UC VISITING			May 3
PASS ENDS	Apr 13	Apr 27	Sept 11
ENROLLMENT MAX	16 units	24 units	College Limit
FEES	UC UNDERGRAD	UC GRAD	NON-UC
PER UNIT FEE	\$279	\$349	\$279
CAMPUS BASED FEE	\$495.45	\$224.93	\$495.45
APPLICATION FEE	N/A	N/A	\$200
UNIT FEE CAP	15 units	12 units	No Cap
L&S TECH FEE	\$2.50/unit (For all L&S Courses)		

*Fees are accurate as of February 2021, subject to change.\**



# MARK YOUR CALENDARS!

Tentative dates for our annual AMCAS Bootcamp and MCAT and DAT Prep Workshops are below!

AMCAS Bootcamp: Saturday, April 10th,  
9:00am - 10:30am

MCAT Prep Workshop: Saturday, May 1st,  
9:00am - 10:30am

DAT Prep Workshop: Saturday, May 8th,  
9:00am - 10:30am

All workshops will be held via Zoom and dates are subject to change. We will share information in the April and May newsletters as well as on Instagram and Facebook.

During the AMCAS Bootcamp we will review important aspects of the AMCAS Applicant Guide, share tips for completing the application, and answer questions.

The MCAT and DAT Prep Workshops will focus on a review of the content and structure of the tests followed by a panel discussion and Q&A featuring UCSB students who have taken and performed exceptionally well on these tests.

**Students interested in being part of the one of the panels should send an email to [prehealthinfo@ltsc.ucsb.edu](mailto:prehealthinfo@ltsc.ucsb.edu).**



# Partners in Wellness

A pre-health organization providing:

General Clinical Volunteering

Art Therapy

Pediatric Volunteering

Shadowing

Scribing

Connect with us for more details:



@partnersinwellness



UCSB Partners in Wellness



partnersinwellnesssb@gmail.com



www.partnersinwellness.info



# CLAS Academic Skills Workshops for Pre-Health Students!

Do you find yourself struggling in courses or want to improve in skills vital for success in your studies and future profession?



CLAS offers 90-minute sessions featuring specific exercises designed to help students identify and improve their academic skills!

- Time Management\*
- Fighting Procrastination\*
- Make a Study Plan\*
- Confronting Confusion\*
- Lecture Strategies\*
- Reading Efficiency\*
- Essay Exam Strategies
- Multiple Choice Exams
- Writing Papers
- Citing Sources
- Reading Comprehension
- Focus
- Motivation
- Confidence
- Performance Exams (New!)

To find sessions offered this quarter, visit the link below or navigate to the "Academic Skills" page under the "Services" tab of the CLAS website!

<http://clas.sa.ucsb.edu/enrollment-schedules-overview/workshop-schedule>

**\*= workshops we highly recommend  
for Pre-Health Students!**

UC SANTA BARBARA

# National College Health Assessment

February 18th-March 10th



*We are inviting every enrolled student to participate in a comprehensive health survey that helps us learn about the health issues students are experiencing for Health & Wellness and others to implement and create programs that meet student needs.*

Participate in the survey and have the opportunity to win a **\$75 Amazon Gift card**.

You will receive an email invitation from **ACHA-Web@ACHA.org** to complete the survey.





SIXTH ANNUAL

# SOUTHERN CALIFORNIA PRE-PHYSICAL THERAPY CONFERENCE

Hosted by the Pre-Physical Therapy Club  
at the University of Southern California

**MARCH 7, 2021 | 10:00AM  
VIA ZOOM**

Join us in our sixth annual Pre-Physical Therapy Conference!

Special Guests include:

Keynote Speaker

Research Panelists

Business Owners

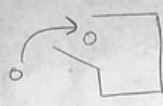
Physical Therapy Specialist Panelists

Doctor of Physical Therapy Program Networking Fair

# LOOKING FOR A NEW WAY TO TAKE NOTES?

T. Graepel (DeepMind): Automatic Curricula in Deep MARL

Heider & Simmel 1944



- socially hard-wired
- principle initially introduced

Intelligence  $\rightarrow \mathcal{V}(\pi) = \sum z^{-k(\pi)} V_m^{\pi}$

measure  $\rightarrow$  complexity weight

Multi-Agent Importance: APPLICATIONS + ARCHITECTURES \* AUTO-CURRICULA!

who is really intelligent?  $\rightarrow$  civilization?

**Problem-Problem**  $\leftrightarrow$  **Auto-curricula**

**COMPETITION**

- other species
- other tribes
- other indians

**COOPERATION**

- multi-share
- learn
- culture/lang.


**What makes a Rich Learning Env.?**

1. agent sees others as part of env. dynamics
2. dynamics are non-state  $\rightarrow$  others learn!
3. other agent's learning  $\rightarrow$  new training task

**① ALPHA ZERO**


- 2 players
- 0-sum
- perfect info.
- policy net: breadth  $\downarrow$
- value net: depth  $\downarrow$

**② CAPTURE-THE-FLAG**



- 2 teams
- 0-sum
- partial info.
- PBT + PROCEDURAL
- adversity hyperparameters


**③ SOCIAL DILEMMAS**



- n players
- mixed motive
- SD = tipping point
- stable emergence
- common resources
- emergent social outcome

T. Graepel (DeepMind): Automatic Curricula in Deep MARL

HEIDER & SIMMEL [1934]



SOCIAL STRUCTURES HARD-WIRED

INTELLIGENCE  $\Rightarrow \mathcal{V}(\pi) = \sum z^{-k(\pi)} V_m^{\pi}$

MEASURE  $\rightarrow$  OF OPENING  $\rightarrow$  COMPLEXITY WEIGHT

MULTI-AGENT IMPORTANCE: APPLICATIONS ARCHITECTURES \* AUTO-CURRICULA!

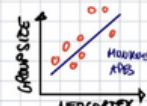
WHO IS REALLY INTELLIGENT?  $\rightarrow$  CIVILIZATION?  $\Rightarrow$  COMPANY AS NECESSARY INGREDIENT!

WHAT MAKES A RICH LEARNING ENV?  $\Rightarrow$  MARL

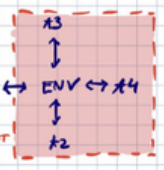
1. AGENT EXPERIENCES OTHER AGENTS AS PART OF ENV DYNAMICS
2. DYNAMICS ARE NON-STAT.  $\leftrightarrow$  OTHERS LEARN!
3. OTHER AGENT'S LEARNING = NEW TRAINING TASK

**SOCIAL INTELLIGENCE HYPOTH.**

SOCIAL COMPLEXITY = KEY SELECTED PRESSURE DUBAR OT!




**AUTO-CURRICULA THROUGH MULTI-AGENT RL**




- EXPLORE BY EXPLOIT  $\rightarrow$  PUSHED INTO
- DIVERSE POPULATION  $\rightarrow$  COVER SPACE
- SKILL-BASED MATCH MAKING  $\rightarrow$  BALANCE FOR ROBUSTNESS

**① ALPHA ZERO**



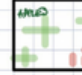
- 2 PLAYERS
- 0-SUM
- PERF. INFO
- Policy NET: BREADTH  $\downarrow$
- Value NET: DEPTH  $\downarrow$
- SELF-PLAY DATA COLL.
- LESS SEARCH

**② CAPTURE-THE-FLAG**



- 2 TEAMS
- 0-SUM
- PARTIAL INFO
- PBT + PROCEDURAL GEN.
- DIVERSITY  $\rightarrow$  META-OP. HYPERPARAMETERS
- 2 TIME-SCALE RNN!
- ISSUE  $\rightarrow$  INTERNAL REPR.

**③ SOCIAL DILEMMAS**



- n PLAYERS
- MIXED MOTIVE
- PARTIAL INFO
- SD = TIPPING POINT SELECTION
- STABLE COOPER. EMERGENCE
- COMMON POOL RESOURCES
- EMERGENT SOCIAL OUTCOMES!

AS A STUDENT IN STEM COURSES, NOTABILITY HAS TAKEN MY NOTE-TAKING, STUDYING, AND PERFORMANCE TO THE NEXT LEVEL. TRY THIS GREAT TOOL OUT IF YOU ARE LOOKING TO TRANSITION OUT OF PAPER NOTE-TAKING. THIS HAS BEEN RECOMMENDED TO YOU BY YOUR PRE-HEALTH ADVISING PEERS!

- TAKE MORE VIVID AND EFFICIENT NOTES
- ORGANIZE ALL YOUR MATERIAL IN ONE LOCATION
- COMPILE NOTES WITHIN AND ACROSS COURSES
- REFERENCE YOUR NOTES WITH PRECISION
- AUDIO RECORD WHILE NOTETAKING AND MORE!

TRY IT OUT WITH . . .



NOTABILITY







THINKING ABOUT BECOMING A  
VETERINARIAN? JOIN US!



# UCSB PRE-VETERINARY MEDICAL ASSOCIATION

---

Attend talks hosted by vet school admission representatives and practicing veterinarians, get tips on applying to vet school and gaining experience, and network with fellow pre-vet students!

FEBRUARY 9, 7-8PM  
FEBRUARY 22, 7-8PM  
MARCH 9, 7-8PM

Meeting Link: <https://ucsb.zoom.us/j/85677251791>

For More Info: <https://linktr.ee/ucsbpvma>



UC Santa Barbara  
Koegel Autism Center



PRESENTS

# T.E.A.M.

THRIVE, ENCOURAGE, ACCOMPLISH,  
& MAKE FRIENDS!

A VIRTUAL PROGRAM PROVIDING A SUPPORTIVE  
SPACE FOR STUDENT WITH AND WITHOUT  
AUTISM TO STAY CONNECTED AND HAVE FUN  
DURING REMOTE EDUCATION

## WHAT TO EXPECT FROM TEAM

- \*Virtual Meet-Ups
- \*Game Nights
- \*Newsletter
- \*Social Connection
- \*Improve your remote experience
- \*de-stress
- \*Have FUN!

Learn and discuss academic, social, and  
personal skills with fellow Gauchos!

Sign-up TODAY with your UCSB.edu Email  
Enrollment is free and ongoing throughout the Quarter  
For more Information visit:  
<https://education.ucsb.edu/autism/TEAM>

# Advising Appointment Reminder!

## Zoom



*Appointments with Rob, Allie, Anna, or Juliette:*

**Prefer Zoom? Send an email to [prehealthinfo@ltsc.ucsb.edu](mailto:prehealthinfo@ltsc.ucsb.edu) indicating your preference. Please include your perm #, day & time of appointment, and the name of the advisor.**

## Phone



**Note: Phone is the default appointment type.**

**Also, be sure to join the listserv and follow us on social media!**

**Note: Drop-Ins will all be conducted by phone.**



# INSIDE UCSF

Take an inside look at UCSF's Schools of Dentistry, Medicine, Nursing and Pharmacy, the Graduate Division and Physical Therapy.



"Inside UCSF gave me a real impression of what a student can expect in terms of training and required curriculum." – Inside UCSF participant

Come enjoy UCSF student panels, interactive workshops, classroom experiences and interactions with UCSF leadership, faculty and students. Tour the campus and our brand new state-of-the-art facilities. Explore the spirit of interprofessional collaboration that sets us apart. See Inside UCSF for yourself >>> [cseo.ucsf.edu/](http://cseo.ucsf.edu/)

## APRIL 2-3, 2021

This exciting and informative event is designed to introduce students to a specific health science career path, provide opportunities to meet students and faculty, and offer a chance to become inspired about future career possibilities. The program – including meals and travel – is offered at no cost to selected applicants.

## UCSF

University of California  
San Francisco

*advancing health worldwide™*

# National Hispanic Pharmacists Association (NHPA)

Join UCSF in our “Journey into Healthcare.” The purpose of this conference is to inform and allow undergraduate students to explore different careers in healthcare, including dentistry, medicine, nursing, pharmacy, and physical therapy.

At the conference, you will have the opportunity to learn more about the admissions process at UCSF and interact with current students in the schools of dentistry, medicine, nursing, pharmacy, and physical therapy.



**Attire:** Business Casual

**Cost:** Free!

**Date:** Saturday, April 10th

9:00am - 3:30pm

**RSVP:** [tinyurl.com/s9godv4m](https://tinyurl.com/s9godv4m)



SEEKING COLLEGE STUDENTS

# VIRTUAL VOLUNTEER OPPORTUNITY

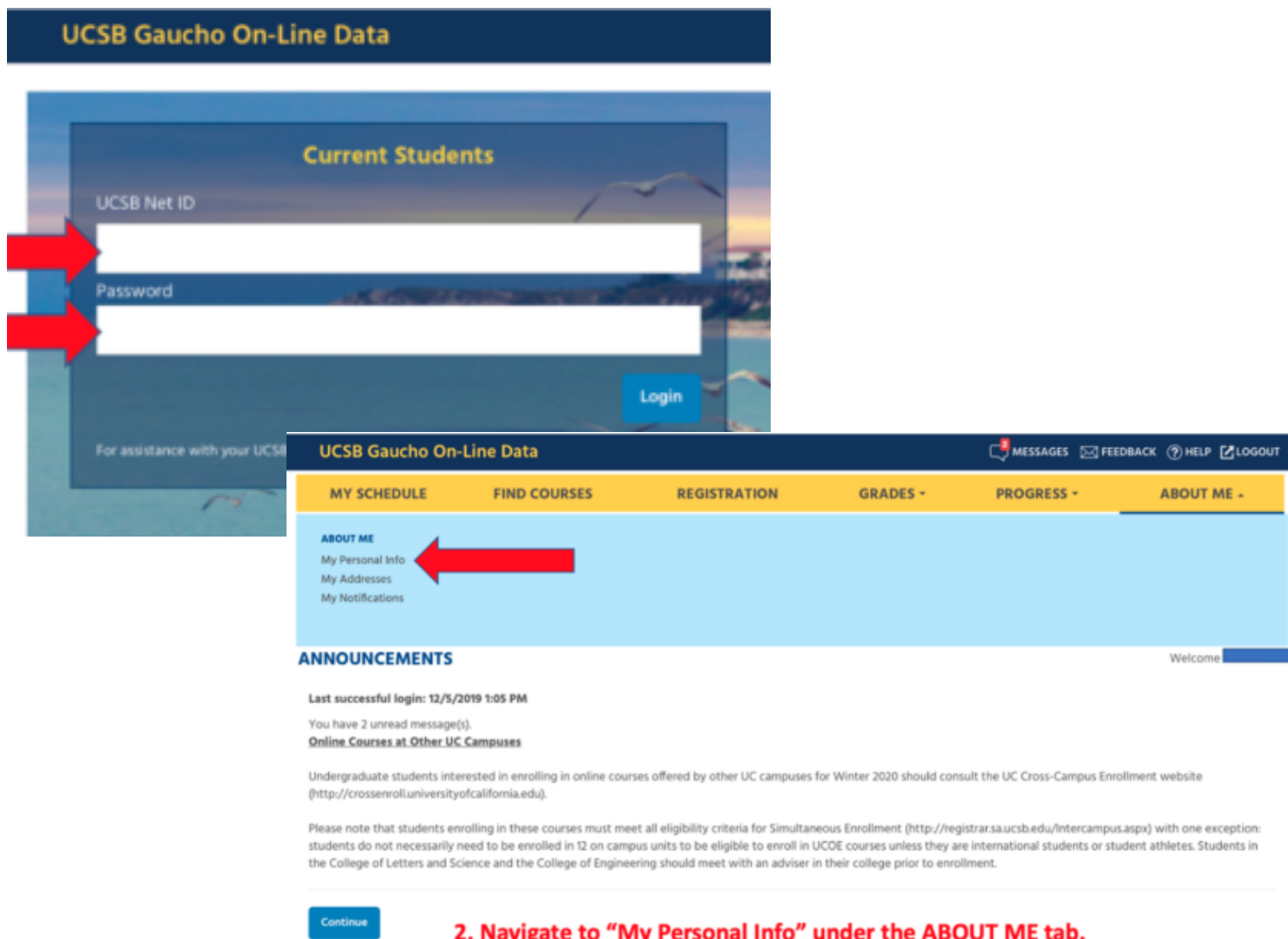
Looking for remote volunteer work? Become a virtual mentor for a K-12 student and tutor, give college tips, teach a new skill, or just socialize with a younger student.



**SIGN UP AT**  
**STUDENTSPHERE.ORG**

# Update your Pre-Professional Emphasis in GOLD!

## 1. Login to GOLD.



UCSB Gaucho On-Line Data

Current Students

UCSB Net ID

Password

Login

For assistance with your UCSB

UCSB Gaucho On-Line Data

MESSAGES FEEDBACK HELP LOGOUT

MY SCHEDULE FIND COURSES REGISTRATION GRADES PROGRESS ABOUT ME

ABOUT ME

My Personal Info

My Addresses

My Notifications

ANNOUNCEMENTS

Welcome

Last successful login: 12/5/2019 1:05 PM

You have 2 unread message(s).

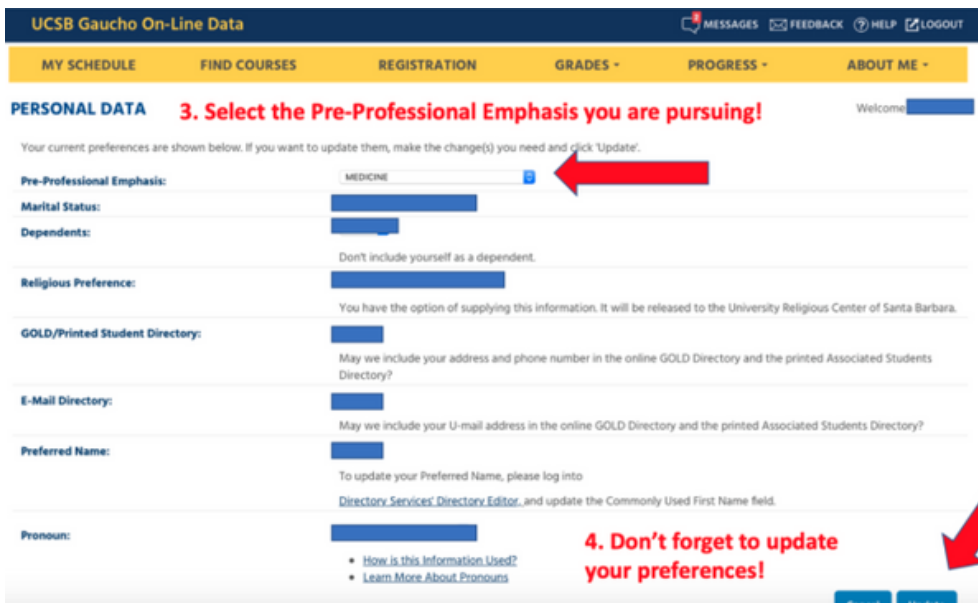
Online Courses at Other UC Campuses

Undergraduate students interested in enrolling in online courses offered by other UC campuses for Winter 2020 should consult the UC Cross-Campus Enrollment website (<http://crossenroll.universityofcalifornia.edu>).

Please note that students enrolling in these courses must meet all eligibility criteria for Simultaneous Enrollment (<http://registrar.sa.ucsb.edu/intercampus.aspx>) with one exception: students do not necessarily need to be enrolled in 12 on campus units to be eligible to enroll in UCOE courses unless they are international students or student athletes. Students in the College of Letters and Science and the College of Engineering should meet with an adviser in their college prior to enrollment.

Continue

## 2. Navigate to "My Personal Info" under the ABOUT ME tab.



UCSB Gaucho On-Line Data

MESSAGES FEEDBACK HELP LOGOUT

MY SCHEDULE FIND COURSES REGISTRATION GRADES PROGRESS ABOUT ME

PERSONAL DATA

Your current preferences are shown below. If you want to update them, make the change(s) you need and click 'Update'.

Pre-Professional Emphasis: MEDICINE

Marital Status:

Dependents:

Religious Preference:

GOLD/Printed Student Directory:

E-Mail Directory:

Preferred Name:

Pronoun:

How is this Information Used?

Learn More About Pronouns

Update

## 3. Select the Pre-Professional Emphasis you are pursuing!

## 4. Don't forget to update your preferences!



# UCSB PRE-MEDICAL SOCIETY

*A student-led organization dedicated to providing pre-med students various opportunities in community outreach and networking.*

**GENERAL MEETINGS  
EVERY OTHER FRIDAY  
5 - 6 PM PST**

ZOOM MEETING ID: 818 2199 9879

**MAKE SURE TO FOLLOW ALL OUR SOCIAL MEDIA ACCOUNTS FOR THE LATEST UPDATES:**



@ucsb\_premedical\_society



@UCSB Pre-Medical Society



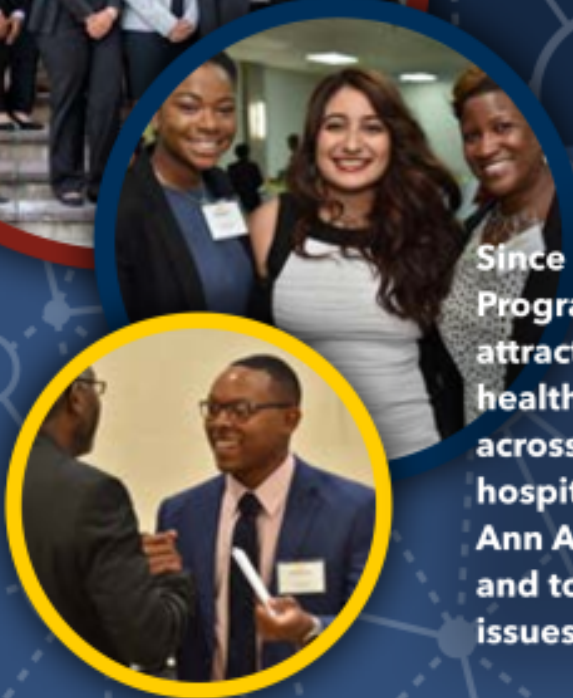
**FOR FURTHER QUESTIONS, EMAIL US AT UCSBPREMEDICALSOCIETY@GMAIL.COM AND VISIT UCSBPREMEDICALSOCIETY.WEEBLY.COM**

**SCAN THE QR CODE TO JOIN OUR GROUP ON SHORELINE!**



# A Healthcare Summer INTERNSHIP that MATTERS

Since 1986, the University of Michigan Summer Enrichment Program (UMSEP) in Health Management and Policy has attracted undergraduate students who seek to improve the health status and health care of underserved communities across the United States. UMSEP partners with Michigan hospitals and other health care organizations in Detroit and Ann Arbor to provide a paid eight week summer internship and to expose students to the health care field and health issues that persist today.



UMSEP provided the opportunity to develop leadership skills and utilize my passion for social justice in pursuit of an equitable health care system."

—Stephanie Hughes,  
UMSEP Alumna

## SEP INTERNSHIPS INCLUDE:

- Paid 8-week internship with a hospital, community health center or other health care organization in Detroit, Ann Arbor, or other sites in Southeast Michigan
- Orientation with the UM School of Public Health with a lecture series on health inequalities and the US health care system by SPH faculty
- Housing, transportation, food allowance, and GRE preparation course provided, all at no cost\*
- Weekly meetings and engagements with health organizations
- Health Equity Research Certificate

\*In-person components are subject to change

## 2021 UMSEP INTERNSHIP

PROGRAM DATES:

**May 25-July 23, 2021**

APPLICATION DEADLINE:

**February 3, 2021**

FOR MORE INFORMATION  
AND TO APPLY:

[sph.umich.edu/sep](http://sph.umich.edu/sep)

QUESTIONS?

[um.sep@umich.edu](mailto:um.sep@umich.edu)  
**(734) 936-3296**



# SUMMER ENRICHMENT PROGRAM

UNIVERSITY OF MICHIGAN

[sph.umich.edu/sep](http://sph.umich.edu/sep)





# PHYSICIAN SCIENTIST TRAINING PROGRAM (PSTP)

The University of Pittsburgh's PSTP is a 5-year medical school program that adds a year of basic or translational research to the regular Pitt Med experience.

**Benefits include:**

- Protected research time
- \$10,000 of tuition assistance for each year of medical school
- Individualized mentoring, & an innovative enrichment curriculum

All levels of study are welcome!

**COME JOIN US ON  
FRIDAY, MARCH 5th @ 1pm PST**

Registration Link:

[HTTPS://DOCS.GOOGLE.COM/FORMS/D/E/1FAIPQLSCUN-O0F3UDN34H6DPMLDCOITTWDQCNU1H1LJL553Q5GVKRUA/VIEWFORM?USP=SF\\_LINK](https://docs.google.com/forms/d/e/1FAIPQLSCUN-O0F3UDN34H6DPMLDCOITTWDQCNU1H1LJL553Q5GVKRUA/viewform?usp=sf_link)

Zoom Link:

[HTTPS://PITT.ZOOM.US/J/95581257989](https://pitt.zoom.us/j/95581257989)

Learn more at [PSTP.pitt.edu](https://PSTP.pitt.edu) or  
Contact Blair Douglass at [Bdd18@pitt.edu](mailto:Bdd18@pitt.edu)



# New Offerings through UCSB PaCE for Pre-Health Students!

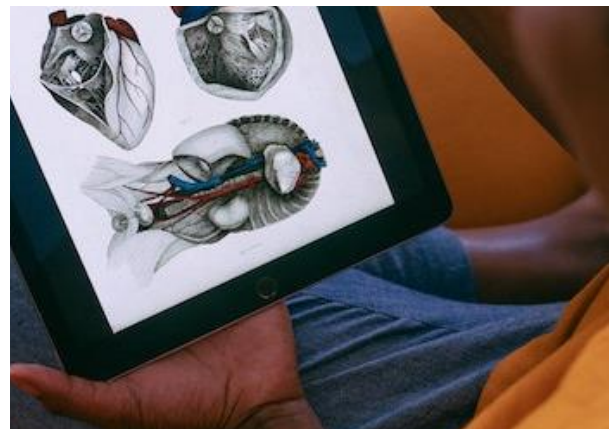
- Online on demand
- Taught by UCSB Exercise and Sports Studies Lecturers
- *Early Bird Discounts* and *\$600 PaCE Scholarships* are AVAILABLE!



**Medical Terminology**  
Medical Terminology for Health Professions gives students in-depth instruction in recognizing and forming medical terms.

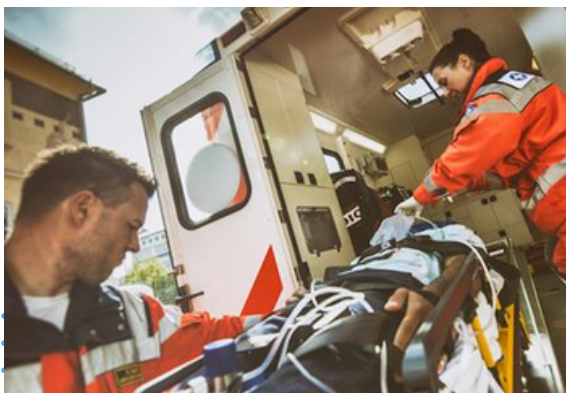
## Human Form & Function

Introduction of the basic structure and function of the human body.



## Emergency Medical Technician (EMT) - Basic

First-time pass rate over 95%. This program gives students the skills and knowledge to function as a working EMT at the basic level.



## Wealth, Race, and Wildlife: The Impacts of Structural Inequality on Urban Wildlife



**Wednesday, March 3**  
**11am-12pm Pacific Standard Time**

Christopher Schell, Ph.D.  
School of Interdisciplinary Arts & Sciences  
University of Washington - Tacoma

Urban ecosystems are intrinsically heterogenous, characterized by dynamic biotic and abiotic interactions that are not witnessed in non-urban environments. Urban flora and fauna experience a suite of novel disturbances and stressors that have led to remarkable phenotypic strategies and adaptations to cope with urban living. Despite recent groundbreaking discoveries and innovation in the fields of urban ecology and evolution, the drivers of urban heterogeneity that induce biological change are seldom articulated. The spatiotemporal distributions of urban organisms are directly affected by the uneven distribution of resources (e.g., refugia, food, water) across cities, all of which are connected to societal function and governance. Hence, to build a comprehensive understanding of urban systems and wildlife adaptation, we must integrate and reconcile how structural inequality – especially racism and classism – shape urban environmental mosaics.

In this seminar talk, Dr. Chris Schell will discuss how structural and systemic inequalities, especially economic and racial inequality, shape ecological and evolutionary outcomes of wildlife. In doing so, we will discuss how leading with an environmental justice and activism framework in the natural sciences can promote conversation, sustainability, and resilience in a human-dominated world.

For more information on this seminar series, including a Zoom link, please visit: [www.nceas.ucsb.edu/equity-justice-seminar](http://www.nceas.ucsb.edu/equity-justice-seminar)



# INSIGHT

## Injury Research Training Program

The **INSIGHT Summer Research Program** is an NIH-funded, eight-week paid summer internship through the University of Washington at Harborview's Injury Prevention and Research Center (HIPRC). Students in our program are matched to clinical research projects and partner with a UW Medicine & Health Sciences Faculty. Students get to meet and learn from peers and health professionals from across the country, and also get to participate in clinical shadowing at Harborview, and social activities and tours, including the King County Medical Examiner's Office.



Bringing together a diverse group of young people interested in health care and research allows HIPRC to create a unique and rich resource for students who seek to learn more about what they can accomplish in the field of injury and injury prevention. The INSIGHT Program offers a **\$3,200 stipend** to those accepted. Below follows our website, where interested students can find the application portal and all the details of the program

**June 14 - Aug. 6, 2021**  
**Monday - Friday: 9:00 am – 5:00 pm**  
**401 Broadway, Seattle, WA 98122.**



<https://hiprc.org/training/undergrad-grad/insight/>



# Plan ahead for the MCAT!



## 2021 Schedule for the Medical College Admission Test® (MCAT®)\*



| Medical College Admission Test

### JAN

SUN	MON	TUE	WED	THU	FRI	SAT
					1	2
3	4	5	6	7	8	9
10	11	12	13	14	15	16
17	18	19	20	21	22	23
24	25	26	27	28	29	30
31						

### FEB

SUN	MON	TUE	WED	THU	FRI	SAT
	1	2	3	4	5	6
7	8	9	10	11	12	13
14	15	16	17	18	19	20
21	22	23	24	25	26	27
28						

### MAR

SUN	MON	TUE	WED	THU	FRI	SAT
	1	2	3	4	5	6
7	8	9	10	11	12	13
14	15	16	17	18	19	20
21	22	23	24	25	26	27
28	29	30	31			

### APR

SUN	MON	TUE	WED	THU	FRI	SAT
				1	2	3
4	5	6	7	8	9	10
11	12	13	14	15	16	17
18	19	20	21	22	23	24
25	26	27	28	29	30	

### MAY

SUN	MON	TUE	WED	THU	FRI	SAT
						1
2	3	4	5	6	7	8
9	10	11	12	13	14	15
16	17	18	19	20	21	22
23	24	25	26	27	28	29
30	31					

### JUN

SUN	MON	TUE	WED	THU	FRI	SAT
		1	2	3	4	5
6	7	8	9	10	11	12
13	14	15	16	17	18	19
20	21	22	23	24	25	26
29	28	29	30			

### JUL

SUN	MON	TUE	WED	THU	FRI	SAT
				1	2	3
4	5	6	7	8	9	10
11	12	13	14	15	16	17
18	19	20	21	22	23	24
25	26	27	28	29	30	31

### AUG

SUN	MON	TUE	WED	THU	FRI	SAT
1	2	3	4	5	6	7
8	9	10	11	12	13	14
15	16	17	18	19	20	21
22	23	24	25	26	27	28
29	30	31				

### SEP

SUN	MON	TUE	WED	THU	FRI	SAT
				1	2	3
4	5	6	7	8	9	10
11	12	13	14	15	16	17
18	19	20	21	22	23	24
25	26	27	28	29	30	

MCAT Admin	Score Release
Jan. 15	Feb. 17
Jan. 16	Feb. 17
Jan. 21	Feb. 24
Jan. 25	Feb. 24
March 13	April 13
March 26	April 27
April 10	May 11
April 23	May 25
April 30	June 1
May 1	June 1
May 14	June 15
May 15	June 15
May 20	June 22
May 28	June 29
June 4	July 7
June 18	July 20
June 19	July 20
June 26	July 27
June 30	Aug. 3
July 17	Aug. 17
July 22	Aug. 24
July 30	Aug. 31
Aug. 7	Sept. 8
Aug. 13	Sept. 14
Aug. 21	Sept. 21
Aug. 26	Sept. 28
Aug. 27	Sept. 28
Sept. 2	Oct. 5
Sept. 3	Oct. 5
Sept. 10	Oct. 12
Sept. 11	Oct. 12

\*The highlighted dates above indicate the U.S. MCAT test dates. For Canadian and international test dates, please visit [students-residents.aamc.org/mcatregister](https://students-residents.aamc.org/mcatregister).  
 Note: The MCAT exam is not offered in February or Oct.-December 2021.  
 Standard start times will be 7:30 a.m. and 3 p.m. each day.

MCAT® is a program of the Association of American Medical Colleges

[aamc.org/mcat](https://aamc.org/mcat)

@AAMC\_MCAT